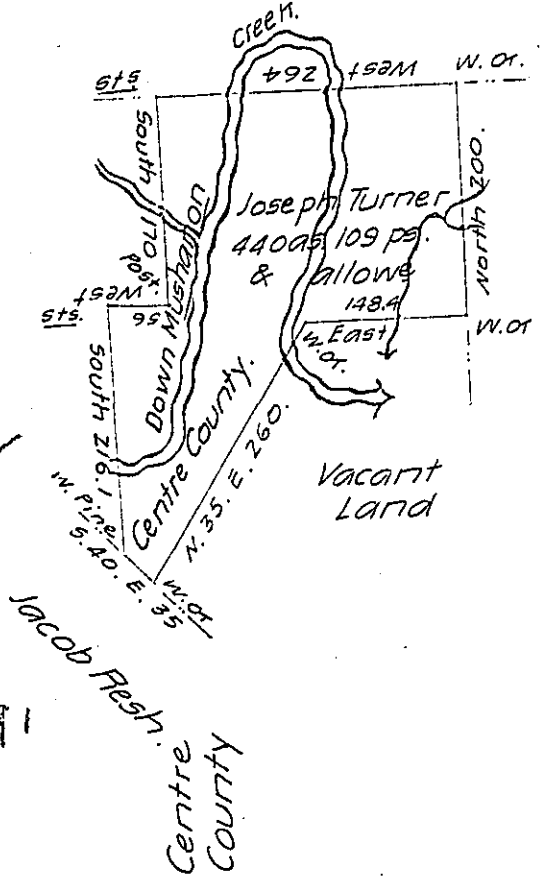


Stephen Kingster
C. 108. 176

Joseph
Turner

Page 112

A. 19. 291



Robert Rainey
C. 180-185

Draught of a Tract of land situated part in Bradford Township Clearfield County and part in Bush Township Centre County containing four Hundred and forty acres and one hundred and nine perches and the usual allowance of six per Cent for roads &c. Surveyed the 16th day of November 1830. In pursuance of a Warrant dated the 3rd day of July 1830 granted to Joseph Turner for 400 acres.

David Ferguson D.S. Clearfield County
Jacob Bollinger D.S. Centre County

To Jacob Spangler Esqr.
Surveyor General

Note) the Mushamon Creek is the line between Clearfield and Centre Counties, the above survey is the land the Warrant calls for but that part marked Centre County claimed by John Plum on an Improvement Title.

IN TESTIMONY that the above is a copy of the original remaining on file in the Department of Internal Affairs of Pennsylvania, made conformably to an Act of Assembly approved the 16th day of February 1833, I have hereunto set my hand and caused the Seal of said Department to be affixed at Harrisburg, this fourth day of June 1907

Henry Howell
Secretary of Internal Affairs.